

# Children and Young Peoples Scrutiny

**Cabinet Member Presentation  
Cllr Alisa Flemming**

**March 2018**



# Education and Youth Engagement

**Cabinet Member Presentation**  
**Cllr Alisa Flemming**

**March 2018**

# Education Standards

- Standards in Croydon's schools are now above the national average at the end of Early Years Foundation Stage, phonics screening check, Key Stage 1 and Key Stage 2, building on improvements seen in recent years.
- At Key Stage 4 (GCSE) the attainment of our pupils is above the England average and progress outcomes are positive.
- At Key Stage 5 Vocational outcomes continue to be extremely positive.
- The percentage of children attending a good or better secondary school has risen to 90% and 48% of secondary age students now attend an outstanding school, compared to 27% nationally.
- Outcomes for our CLA pupils improved at the end of KS1
- Four of our schools received the local authority school of the year award for the inclusive and extensive education they provide for our pupils – St Nicholas School, Riddlesdown Collegiate, St Joseph's RC Junior School and Oasis Academy Byron.

# School Place Planning and Admissions

- Sufficient, high quality and diverse educational provision with a growing population
- Every child offered a school place
- Significant investment in providing new school places

# Harris Primary Academy Purley Way New School



# Harris Primary Academy Purley Way





# Harris Primary Academy Purley Way



# Harris Primary Academy Purley Way





# Harris Primary Academy Purley Way



# Heavers Farm Primary School Permanent Expansion



Heavers Farm Primary School - Building extension

# Heavers Farm Primary School



**Heavers Farm Primary School – New MUGA**

# Children in Care Council



Children in  
Care Council  
**JOIN NOW!**  
HAVE YOUR SAY

**CREATE MEMORIES THIS YEAR WITH  
OTHER YOUNG PEOPLE IN CROYDON**

**16 & 30 JANUARY · 12 & 27 FEBRUARY · 13 & 27 MARCH  
3 & 17 APRIL · 1, 15 & 29 MAY · 12 & 26 JUNE**

- Looked after young people in Croydon can now join the Children In Care Council
- The Children in Care Council gives looked after young people a stronger voice in Croydon
- Turn ideas that help make young people's experience of being looked after into reality
- Have a say in how corporate parenting works for Croydon's looked after young people
- Learn skills, make friends and create memories

FREE DAY TRIPS &  
SUMMER RESIDENTIAL  
SCHOOL HOLIDAY  
ACTIVITY DAYS  
EVENTS, ACTIVITIES AND  
SKILLS WORKSHOPS

Delivering for Croydon | **CROYDON**  
www.croydon.gov.uk



# Takeover Challenge



# Young Mayor 2018



# OnSide Youth Zone





# Croydon Music and Arts



# The Voice of Young People















# Young People Making a Contribution

 A CONCERT EXPLORING MUSICAL WORLDS

**THE PLANETS**  
with **lmp**  
LONDON MOZART PLAYERS

SUNDAY 11th MARCH /  
ST JOHN THE EVANGELIST, SE19 2RX /  
4pm - 5.30pm  
Tickets from £6!



 A CONCERT EXPLORING WORLD MUSIC

**TRADING** with **GRAND UNION ORCHESTRA**  
**ROOTS**

FRIDAY 23rd MARCH /  
ST MARY MAGDALENE CHURCH, CRO 6QD /  
7.30pm - 9pm  
Tickets from £6!





# Next Steps



**CHOOSE**

**YOUR FUTURE**











# Croydon Adult Learning and Training



- Delivers a wide range of part time academic, pre-vocational and vocational provision.
- 2016 **Ofsted** inspection rated provision as '**good**'
- Last academic year 576 part time courses were delivered to over 3,700 learners. Nearly **3,000 learners** have enrolled on courses already this year.
- Delivering courses to **133 adults with learning disabilities** (Feb 17/18)
- **58%** of FE learners are on **mean tested benefits** (Feb 17/18)
- 3 main centres (Central Croydon, New Addington and Strand House in Thornton Heath)
- Targeted provision delivered at children centres, schools and community venues to support **access to learning and family learning**
- Working with businesses and employers to **raise the skills level of employees**
- Delivering **apprenticeships** in Business Administration, Early Years, Health and Social Care and Teaching assistants.
- Overall 3 year **achievement rates** are comparable to or above **national benchmarks**
- **Preparing learners for employment** and ensure employability skills are embedded
- Using **learner outcomes** and **local priorities** to support future **commissioning**

# CALAT – Focus for 2018

- Deliver **quality improvement plans** in response to areas identified through the Ofsted inspection and self-assessments.
- Use comprehensive performance data to **drive improvement and maximise funding**
- Deliver the **GLA capital fund project** – (tech refresh of curriculum network, Wi-Fi and equipment at all sites)
- Deliver **apprenticeship training at all levels** maximising use of the Apprenticeship Levy
- Ensure the service continues to flex and respond to emerging areas of need; **addressing skills gaps** identified by employers and ensuring courses have a **direct link to employment**.
- Continue to **promote access to learning** and target community learning to specific groups/communities.
- Prepare for the **devolution of Adult Education Budget** funding and ACL review



Education & Skills  
Funding Agency

# CALAT – Good news

## CREATIVE COURSES ON OUR DOORSTEP

Do you have a passion for fashion? Could you be the next David Bailey or David Hockney?



CALAT (Croydon Adult Learning and Training Centre) at Strand House in Zion Road offers a great range of creative courses for the hobbyist or those wanting to pursue a career. Courses are subsidised and CALAT offers a vast range of subjects including: painting and drawing, floristry, photography, dress making and art history and appreciation. The classes are for all ages from 20s to retirement age with a maximum of 14 in each class to ensure a good teacher to student ratio. There are two dress making courses on a Wednesday as part of a 10 week course costing £140 operating from 10am to 12pm and 1.30pm to 4pm. The class is taught by Anne Cooper, who worked as a theatre costume designer and when not teaching runs a bridal and evening wear design service. She said: "It doesn't really matter if you are a beginner or advanced as everyone works on individual projects. It's a nice range of mixed abilities. "We've had students who have gone on to be accepted on fashion courses, work in dry cleaners doing alterations or

gone on to start their own dress making business. If you have a flair for fashion, drive and ambition there are plenty of opportunities out there." The vocational course is accredited and shortly there will be the opportunity to work towards a Level 2 City and Guilds in dressmaking. The centre is introducing a two day t-shirt design making course over Easter and other one day courses which can be viewed on the CALAT web site: <http://www.calat.ac.uk/our-centres/> Mark Huggett, CALAT's creative arts programme manger, who also lives in Thornton Heath is keen to see more arts and crafts courses run at the centre. He said: "Arts is for all ages and we are keen for local people to be more aware of what creative course are available on their doorstep." The five week drawing and painting class which is held on Saturdays is for all levels and covers still life, portraits and general art skills. The photography course runs from April 28 to July 7, on Saturdays 10am-12pm and will cover perspective, storytelling and how to create your own style and includes lessons in street and wildlife photography.



## Awards ceremony for LDD learners (Nov 2017)



## 'Flying the flag for CALAT in New Addington'



Located along the length of Central Parade 13 banners now point the way to the New Addington centre – promoting access to learning in the area.



## 0-25 SEN

- 0-25 SEN service moved to Education and Youth Engagement Directorate in January 2018 to align work with schools and promote inclusion
- New 2-19 ASD Free School approved by the DfE to open in September 2020
  - Additional specialist provision in the borough
  - Provision of outreach work to mainstream schools in the borough to upskill the workforce and ensure children's needs are met in their current school setting
  - Reduce the need for children to move to schools out of borough for specialist education
  - Reduce the need for children to travel
- Plans to provide specialist post-16 provision in borough in conjunction with Croydon College
  - Reduce the need for students to travel out of borough
  - Maintain local links
  - Improve links with local employers and improve employment prospects

### Key achievements

567 school and early years setting staff have received food/healthy eating related training

School meal uptake has increased from 81.7% to 84.8% for UIFSM and 53.7% to 62.1% for KS2

7 Food Flagship schools have supported staff from 48 other local schools to make improvements to their food provision and education



5 schools now have Edible Playgrounds



Annual Schools' Marketplace



NEW! SUGAR SMART campaign launched



NEW! Targeted family cookery programme launched

# Children's Services Improvement

Cabinet Member Presentation  
Cllr Alisa Flemming

March 2018

# Partnerships

OUR  
FOCUS

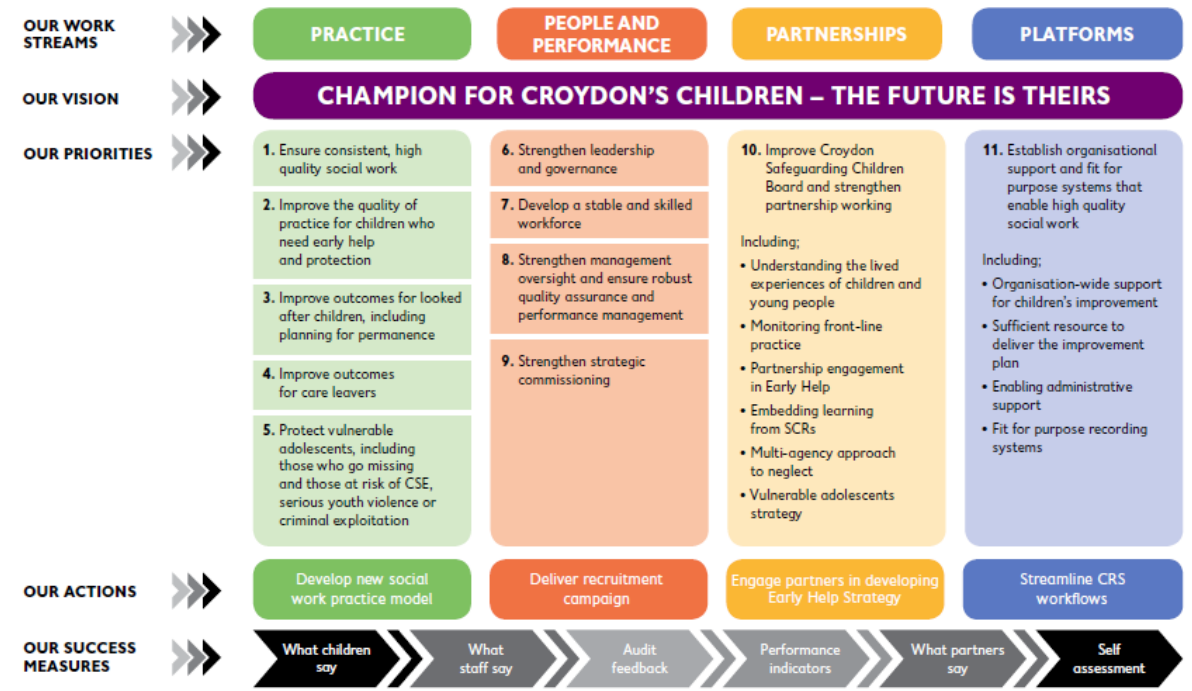
- Local Strategic Partnership has taken 'Youth' as its priority focus for the next to years. Work and priorities developed from our successful Youth Congress.
- Health and Wellbeing Board – has agreed to lead on Child and Adolescent Mental Health.
- I will be starting up a revised Children and Families Partnership.
- Croydon Children's Safeguarding Board is gaining in strength under the new Independent Chair Di Smith.



# Children's Services Improvement – our plan



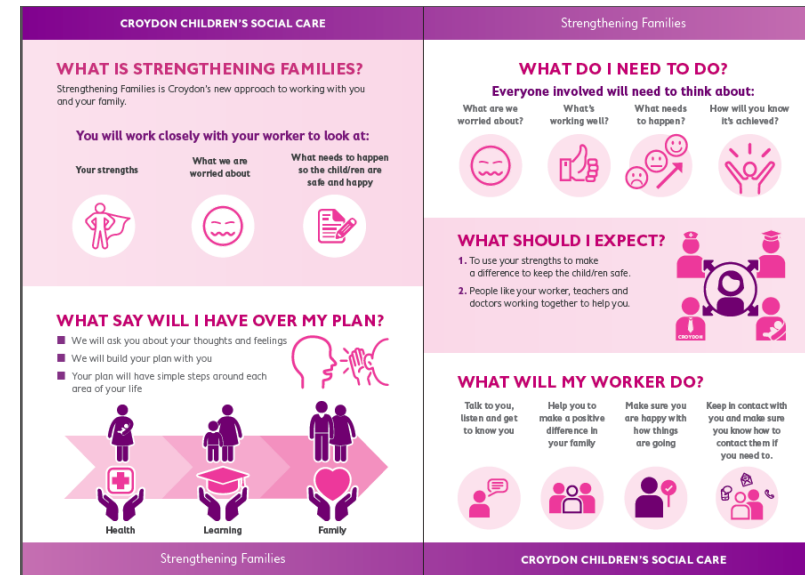
## CHILDREN'S IMPROVEMENT PLAN ON A PAGE



**CROYDON** | Delivering for Croydon  
[www.croydon.gov.uk](http://www.croydon.gov.uk)

# Key achievements

- **Investment** £3.8m committed to deliver the improvement plan and £10.9m added to the base budget for 18/19
- **More staff** additional social workers, managers and teams added to the busiest services, including over 30 business support staff, two new Heads of Service and specialist roles
- **Clear social work practice model** (strengthening families) which places children at the centre of our thinking and focuses on four key questions
- **Single point of contact** A joined up front door across Children's Social Care and Early Help to ensure families get to right help at the right time



Our leaflet for partners on the new model



## So what? (Impact from Jan data)

OUR  
FOCUS

- Average caseload per social worker reduced across all services except assessment
- More young people who go missing are being spoken to understand the reasons why and help them stay safe
- More children on a Child Protection plan being visited on time
- Positive feedback from staff on new social work practice model training
- More care leavers with an up to date pathway plan to support them into adulthood



Photo from strengthening families training



## Key challenges

- **Increasing demand** a sharp rise in the number of referrals into children's social care which require an assessment
- **High caseloads** in the assessment service mean that social workers and managers don't have the time or space to improve their practice
- **Recruitment and retention** difficulties in attracting enough high quality social workers and managers to join Croydon, and a clear offer and opportunities to keep good staff here
- **Supervision** not all social workers receiving regular 1-1s support from their manager and
- **Poor recording** which means that key information including risks and decision about a child's life are not always evidenced properly

